

# The Salix Log Cabin

Centennial Celebration

1926 — 2026

One hundred years ago, the people of Salix came together — donating their skills, their labor, and their materials — to build a gathering place that still stands today. This is their story, and the story of the community that made it possible.



Main Street, Salix, Pennsylvania — early 1900s

## THE CABIN

### Built by Community Hands

Construction began in 1926, when residents donated their skills, labor, and raw materials to build Salix’s civic heart. Primary craftsmen were **Algie Reynolds** and **Ananias Miller**.



The Salix Log Cabin today — still standing after one hundred years.

## COMMUNITY LIFE

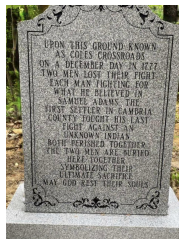
### Salix Community Club

The **Salix Community Club**, founded in **1953**, has made the Log Cabin the heart of community life for generations — hosting Easter egg hunts, visits from Santa, and the memorable **Bicentennial celebration** of 1976, complete with a parade through the village. The Club remains active today and is organizing this very **Centennial Open House**.

## FRONTIER ORIGINS

### The Adams Family

Samuel and Solomon Adams, along with their sister Rachel, are credited as the first white settlers in Cambria County. Rachel was killed by Delaware Indians near Elton. Both Samuel Adams and an unknown Indian were killed and buried together at Coles Crossroads; Adams Township was formed in their honor in 1870.



The Coles Crossroads Memorial Stone — where Samuel Adams and an unknown Indian were buried together in December 1777.

## A VILLAGE GROWS

### A Century of Firsts

- 1806** George Kring moves family into the Elton area, ~1,000 acres. Followed by the Barners, Fyes, Stolls, Snavelys, Millions.
- 1817** Jacob Stull Jr. becomes the first official resident, purchasing 451 acres from Wolford’s Farm.
- 1857** First one-room schoolhouse built on the Kring property.
- 1870** Adams Township created Jan. 5. Village briefly called *Adamsburg*.
- 1888–89** Post office established; Pennsylvania Railroad arrives. Station behind what is now the Salix Bank.
- 1896** Salix Telephone Company incorporated. First phones: Dr. Frank Livingston, Peter Shank, and Jonas Fouch.
- 1898** First passenger train runs South Fork to Windber, June 20. Population of Salix: 45 people, 10 families.
- 1905–06** Electricity arrives via the Dunlo Light, Heat & Power Company, also furnishing light for Beaverdale.
- 1906** Prof. B. Newton Palmer of Salix Academy becomes the first Supervising Principal in Cambria County.
- 1924** Salix State Bank chartered May 29. Founders include Dr. Frank J. Livingston, Isaac N. Kring. Builder: Cyrus Wissinger.
- 1926–27** The Log Cabin is built and dedicated.

## THE JOURNEY OF A NAME

### From Dundee to Salix

- 1788** Land warrant issued as *Dundee*, Cumberland County.
- 1833** Known as *Farmersville* in Richland Township.
- 1870** Adams Township created Jan. 5. Village briefly called *Adamsburg*.
- 1880** Renamed *Salix* — Latin for *Willow* — when the post office was established. The name was suggested by **Dr. Frank Livingston**, a local resident who saw it on a bottle of “Salix Niagoraments,” chosen to avoid confusion with another Adamsburg in Pennsylvania.

FAITH & COMMUNITY

## The Churches of Salix

Before any church building existed, circuit riders on horseback brought worship across the Alleghenies. **Rev. Jacob Albright** converted early settler George Kring, who helped found congregations across Elton and Salix. **Rev. Levi Ross**, an Evangelical circuit rider, built the oldest house on Main Street in the 1880s.

**Bethel United Methodist Church** formerly *Evangelical United Brethren*

Tracing its roots to the **Evangelical United Brethren Church**, erected in 1841, this is recognized as the oldest Evangelical structure west of the Allegheny Mountains — serving a regional circuit including Dunlo and Elton. On **April 23, 1968** it became **Bethel United Methodist Church** at the national merger of the Evangelical United Brethren and Methodist churches.



U.F. (United Brethren) Church, Salix, Pa. — early 1900s postcard

THE CHURCH OF THE BRETHREN

## Maple Grove Church of the Brethren

The Maple Grove Church of the Brethren served the Adams Township community throughout the twentieth century, on land donated by **Samuel and Caroline (Varner) Knavel** — the same spirit of generosity that built the Salix State Bank and the Log Cabin.



Maple Grove Church of the Brethren, October 1967

PLEASANT GROVE MENNONITE CHURCH

## Pleasant Grove Mennonite Church

Established in 1899 as the Elton Mission under **L.A. Blough**, the congregation became the Elton Mennonite Church by 1901, with **David Stull** starting its Sunday school in 1903. In 1910 the original Lutheran Church building was dismantled and a new building erected on land donated by **Levi Knavel** — renamed **Pleasant Grove Mennonite Church** for the grove of trees surrounding it. By 1958 the congregation counted 27 members, with the Wingard, Knavel, Blough, and Heller families among its faithful.

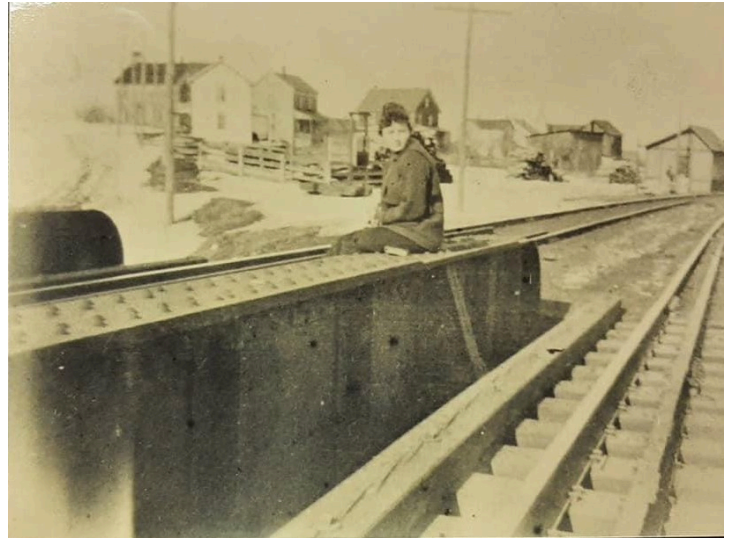


CONNECTED TO THE WORLD

## The Pennsylvania Railroad

The South Fork Branch was the lifeblood of the Stonycreek Valley, carrying passengers, coal, mail, and freight — linking the valley with the region’s growing steel and coal industries.

By 1926, only one passenger train remained. When the Salix stop was eliminated, the hardship for those without private transportation helped spark the founding of the Salix State Bank. A surviving 1913 Sunday timetable:



The Pennsylvania Railroad bridge at Salix — a person sits on the bridge as the village spreads behind. The station stood behind what is now the Salix Bank.

P.M.	STATION
5:25	South Fork
5:33	St. Michael
5:38	Lovett
5:51	Lloydell
6:16	Dunlo
6:19	Llanfair
<b>6:45</b>	<b>Salix ★</b>
6:53	Eltonburg
7:04	Scalp Level
7:07	Windber



Ike Kring Hill, Rt. 160 out of Salix. The brick road stopped short of this hill; cattle had their own tunnel under the railroad tracks to reach pasture.

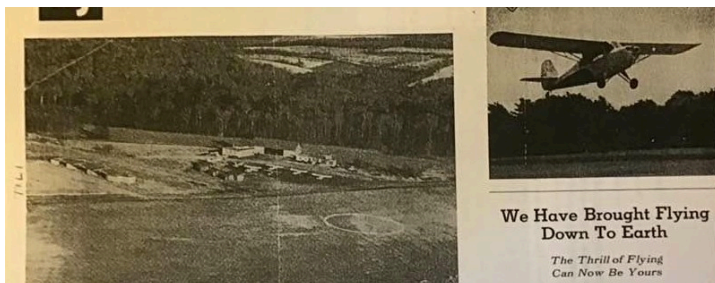
FROM RAILS TO RUNWAYS

## Salix Takes Flight

As automobiles and aviation replaced rail travel, Salix briefly became home to **two small grass airfields** carved from local farm pastures in the 1930s–50s.



Old Salix Airport from the air — at the junction of the WPA Road and Route 160. The landing circle is visible in the field.



Advertisement for Luther Flying Service — headlined “Fly at Salix Airport” — confirming Luther operated at the Old Salix Airport.

**Old Salix Airport** Located at the junction of Route 160 and the WPA Road (Beauty Line Road). The Luther Flying Service ad — headlined “Fly at Salix Airport” — confirms Luther operated here, not a separate field.

**Old Salix Airport** at Rt. 160 and the WPA Road was the main field, home to the Luther Flying Service. Tragedy struck when **Jay Westover** and his son were killed after their plane stalled at low altitude and nose-dived. The field stayed active into the postwar era with Civil Air Patrol operations around 1950.

**Salix Airport**, located on what is now Martin Manor south of Salix, was a second grass airfield carved from a long pasture. It operated during the same era before both fields quietly disappeared as aviation centralized at larger paved facilities.

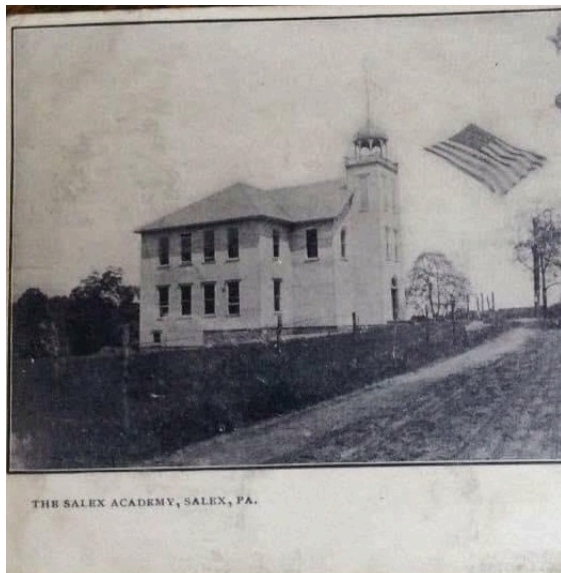
LUTHER FLYING SERVICE — RATE SCHEDULE

Service	Rate / hr
Ground School Instruction	\$0.75
Dual Instruction	\$10.00
Student Solo	\$8.00
Night Dual	\$10.00
Night Solo	\$8.00
Instrument Flying Instruction	\$20.00
Link Training	\$8.00
Plane Rental — 65 hp (qualified pilots)	\$7.00

PIONEER AVIATION

## Two Airfields, Two Stories

**Jay Westover**, who had helped many early local pilots get their start, was later killed at the Old Salix Airport alongside his son when his plane stalled at low altitude and nose-dived. **Salix Airport**, located on what is now Martin Manor south of Salix, was a second grass strip that operated during the same era before both fields quietly disappeared.



The Salix Academy, Salix, Pa. — early postcard. Forerunner of Adams Township High School, conducted by Dr. Byron W. King of Pittsburgh.

CULTURE & LORE

## The “Little Chautauqua”

For ten days each July, Salix hosted a traveling Chautauqua festival under large canvas tents — lectures, music, educational presentations, and popular Chalk Talks that brought culture and entertainment to rural Cambria County. The event earned Salix the affectionate title “*The Biggest Little Chautauqua on Earth.*”



Salix Academy, c. 1918, near the present-day location of the Log Cabin. The tall structure visible in the background is where Chautauqua programs were held each summer.



THE FOUNDING FAMILIES

From the earliest pioneers who cleared the land to the craftsmen who raised this cabin in 1926, these families built Salix.

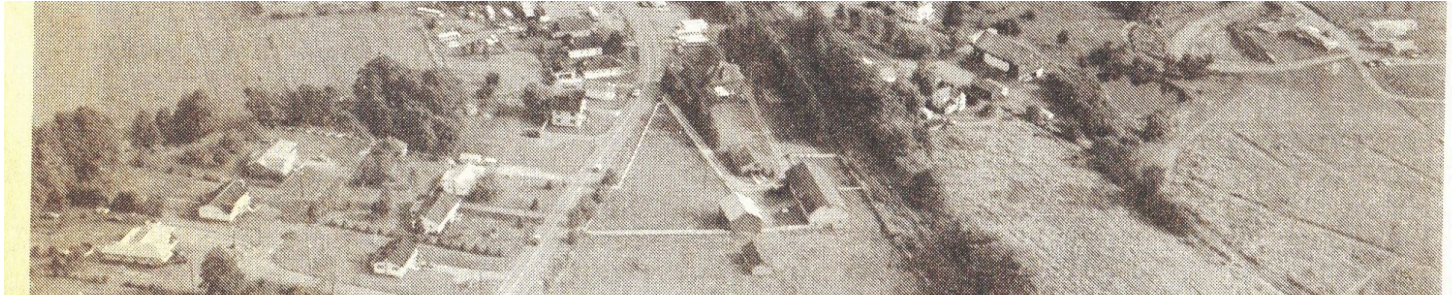
Adams · Kring · Stull · Barnhart · Eye · Stoll · Snively ·  
Millions · Wissinger · Livingston · Reynolds · Miller · Horner · Leamer · Dunmire

EDUCATION

## Salix Academy

The first school in the area was held in the Stanley Felix house in the 1870s — two floors, four rooms. By 1904, community leaders founded the **Salix Academic Association**, establishing Salix Academy with 76 students, two instructors, four classrooms, and an assembly hall. **Prof. B. Newton Palmer** served as its first principal and in 1906 became the first Supervising Principal in all of Cambria County.

Adams Township took over around 1911, eventually growing into **Forest Hills Senior High School** (1966).



Salix from the air — Route 160 winds through the village, Wolford farm in the foreground, Beautyline Homes at top right. Photo by Merle Agnello.

### Salix Today

The village of Salix has changed since Samuel Adams first pushed into the Allegheny wilderness. The railroad is gone. The grass airstrips are gone. The coal mines are quiet. But Salix endures — shaped by the same character that built the Log Cabin a century ago.

The Salix State Bank — built by the community for itself when the railroad left — grew into 1ST Summit Bank, with 16 offices and over \$1 billion in assets. It is still known locally as “Salix Bank.”

The schools that began in a one-room building on the Kring property grew through Salix Academy and Adams Township High School into Forest Hills Senior High School, serving the region since 1966.

Route 160 still winds through the village, past the church, past the bank, past the houses on Adams Avenue that have stood for generations. Rachel’s Run still flows near Elton. The Coles Crossroads stone still stands in the woods, marking where two men were buried together in 1777.

*And the Log Cabin still stands.*

One hundred years ago the people of this community built it with their own hands as a gift to one another. Today we gather inside it to remember them, to celebrate what they made, and to carry it forward.

### DID YOU KNOW?

- ◆ **Salix means Willow.** The Latin name was chosen in 1880 to avoid confusion with another Adamsburg already in Pennsylvania.
- ◆ **The first phone in Salix** belonged to Jonas Fouch — the local undertaker — one of only three phones in the village in 1896.
- ◆ **The Log Cabin** was built entirely through community donation. Residents gave their skills, their labor, and the raw materials — at no cost to the township.
- ◆ **Prof. B. Newton Palmer** of Salix Academy became the first Supervising Principal in all of Cambria County in 1906, earning \$125 per month.
- ◆ **Rachel Hill Elementary School** preserves the memory of Rachel Adams, credited as the first white woman settler in Cambria County.
- ◆ **The Salix State Bank building** cost exactly \$10,930.80 to construct in 1925. It is still the bank’s home today, nearly a century later.
- ◆ **Samuel Adams and an unknown Indian** were killed in the same fight in 1777 and buried together — a rare act of shared respect on the frontier.
- ◆ **The South Fork Railroad**, predecessor to the PRR branch that served Salix, was organized in 1881. Its South Fork dam failed in 1889, causing the Johnstown Flood.

### BANKING & COMMERCE

## The Salix State Bank

When the Pennsylvania Railroad eliminated the Salix stop, most residents had no automobile and no way to reach a bank. Six local businessmen solved the problem: **Dr. Frank J. Livingston** (President), **Frank B. Horner**, **John G. Leamer**, **Isaac N. Kring**, **Dr. W.W. Livingston**, and **Earl F. Dunmire** chartered the Salix State Bank on May 29, 1924, with 85 original shareholders.

The bank first opened in July 1924 in a small frame house — now Miller Motor Co. at 1185 Forest Hills Drive. It could not open until 50% of stock was sold for cash. A lot at the junction of the Dunlo and Johnstown brick roads was purchased from Frank B. Horner for \$750. Builder **Cyrus Wissinger**’s bid of \$10,930.80 was approved in March 1925. When the Stock Market crashed in 1929, directors put their own money in to keep it solvent. It grew into **1ST Summit Bank**, now with 16 offices and over \$1 billion in assets.



The Salix State Bank building, constructed 1925 by Cyrus Wissinger for \$10,930.80. Window reads “3½% Paid On Savings.”

## SALIX IN CONTEXT

## An Agricultural & Railroad Town

While surrounding villages — Dunlo, Sidman, St. Michael, Gramlingtown, and Llanfair — were coal mining towns, Salix and neighboring Elton developed as agricultural and railroad communities. This shaped the character of Salix: its economy built on farming, small business, and the railroad rather than the mines.

The area had been Native territory for centuries before European settlement. Adams Township was likely Shawnee territory — historical accounts record “more than a peck of arrowheads” found on a single local farm, with evidence of Native camping grounds throughout the area. The old Bedford Road through Adams Township followed the ancient Conemaugh Path, traveled by settlers, traders, and Native peoples alike for generations.

## A PLANNED COMMUNITY

## Beautyline

Around 1911, **Cyrus Wissinger**, **W.H. Bantly**, and **Rev. F.D. Ellenberger** planned a new residential community on the Emanuel Fye farm along Beauty Line Road, calling it *Wiselban*. Some homes were built on Wissinger Avenue, but the full plan was never realized. The area is still known as Beautyline.



Salix, 1918 — Main Street in front of Wright's Store, with the blacksmith's shop across the road and an early automobile marking the transition from horse-and-buggy to motorized transport.

## COMMUNITY &amp; AGRICULTURE

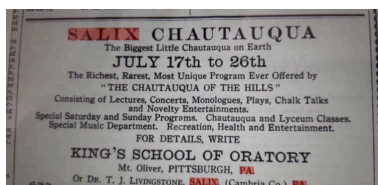
## The Salix Grange

**Salix Grange #1864**, reorganized under its 1920 charter with **J.O. Thomas** as first Master, brought together the farming families of Adams Township. The Thomas, Rhodes, Helsel, and Kring families formed its core. **L.E. Helsel** — one of the largest potato growers in Cambria County and a Holstein cattle breeder — embodied its mission to advance agricultural standards. The Rhodes family, major landowners whose farmstead was central to Salix's development, were active in both the Grange and the local German Reformed Church.

## COMMUNICATIONS

## The Salix Post Office

The **Salix Post Office** was established on **February 15, 1888** — the same era that brought the Pennsylvania Railroad to the village. The name *Salix* had been chosen in 1880 specifically to give the new post office a unique identity, avoiding confusion with another Adamsburg already operating in Pennsylvania. The post office anchored daily life in the village, connecting Salix families to the wider world through mail, money orders, and news. **Jacob R. Stull** served as the first postmaster. It carries the ZIP Code **15952**, still in use today.



“The Biggest Little Chautauqua on Earth” — Salix Chautauqua advertisement, July 17th to 26th, presented by King's School of Oratory, Pittsburgh. Contact: Dr. T.J. Livingstone, Salix, Cambria Co., PA.

## CRIME &amp; CONSEQUENCE

## The 1935 Bank Robbery

In September 1935, the Salix State Bank was held up at gunpoint. James Gowen and Charles Dazsi, both 22, made off with \$2,050. Their escape did not last long.

After their capture, the two men re-enacted the robbery for police on September 26 — a detail reported by United Press wire services across the country. They then led officers near Schellsburg, where under a log overgrown with grass and shrubbery, police found three shotguns intended for further holdups.



Wissinger Hardware, Salix — Appliances, Glass, Paint, Roofing. Cyrus Wissinger built both the Salix State Bank and the Log Cabin.



Luther's Garage, Salix, Pa. — 1923 advertisement for General Repair Work, Gas, Oils, and Chevrolet Parts. Phone 5-W.

## THE WIDER VALLEY

## Coal, Iron & Community

The villages along the South Fork Branch formed an interconnected world. Lloydell, Dunlo, and Llanfair were mining towns; Beaverdale and Sidman were commercial centers; Elton and Salix anchored the agricultural heart. All were bound by the same tracks, telephone lines, and families.

## COMMERCE &amp; COMMUNITY

## The Salix Superette

**Edward “Ed” Andrykovitch** (1927–2019) of Beaverdale was the owner and operator of the Salix Superette, serving the Adams Township community as its neighborhood grocery. Ed also operated the Beaver Supermarket. A life member of the Summerhill Township Volunteer Fire Department and a member of St. Mary's Byzantine Catholic Church, he was remembered by neighbors as a kind and generous man. His daughter Vicki married into the Felix family of Salix.



The Salix Superette — aerial view, 1981. The “Salix Superette” sign is visible at lower left, along Route 160.

COMPLETE TIMELINE

## Salix: From Wilderness to Village

<b>Pre-1777</b>	The Conemaugh Path (Shawnee trail) runs through what will become Adams Township.
<b>1777</b>	Samuel Adams and an unknown Indian killed and buried together at Coles Crossroads. Rachel Adams killed near Elton.
<b>1788</b>	Land warrant issued as <i>Dundee</i> , Cumberland County.
<b>1804</b>	Cambria County formed.
<b>1806</b>	George Kring settles Elton area, ~1,000 acres.
<b>1817</b>	Jacob Stull Jr. first official resident, 451 acres.
<b>1833</b>	Village known as <i>Farmersville</i> , Richland Township.
<b>1841</b>	First Evangelical Church built. Land donated by Jacob R. Stull. Evangelical Church Cemetery established alongside — no deed ever recorded.
<b>1857</b>	First one-room schoolhouse on Kring property.
<b>1870</b>	Adams Township created January 5. Village called <i>Adamsburg</i> .
<b>1880</b>	Renamed <b>Salix</b> (Latin: Willow). Post office established.
<b>1881</b>	South Fork Railroad organized. Dam later causes 1889 Johnstown Flood.
<b>1880s</b>	Rev. Levi Ross, circuit rider, builds oldest house on Main Street.
<b>1888–89</b>	Pennsylvania Railroad arrives. Station established.
<b>1896</b>	Salix Telephone Co. incorporated. Three phones in the village.
<b>1898</b>	First passenger train, South Fork to Windber. Population: 45 people, 10 families.
<b>1904–05</b>	Salix Academy established. 76 students, 2 instructors, 4 classrooms.
<b>1905–06</b>	Electricity arrives via Dunlo Light, Heat & Power Co.
<b>1906</b>	Prof. B. Newton Palmer becomes first Supervising Principal in Cambria County.
<b>1911</b>	Adams Township takes over Salix Academy. Wiselban/Beautyline community planned.
<b>1923</b>	D.P. Luther's Garage established.
<b>1924</b>	Salix State Bank chartered May 29, 85 shareholders.
<b>1925</b>	Bank building constructed for \$10,930.80 by Cyrus Wissinger.
<b>1926–27</b>	<b>Log Cabin built and dedicated.</b> Craftsmen: Algie Reynolds and Ananias Miller.
<b>1929</b>	Stock Market crash. Bank directors use personal funds to keep bank solvent.
<b>1930s–50s</b>	Old Salix Airport operates. Luther Flying Service active. Civil Air Patrol c. 1950.
<b>1935</b>	Salix State Bank robbed. \$2,050 taken; Gowen & Dazsi captured.
<b>1966</b>	Forest Hills Senior High School opens.
<b>1968</b>	Salix congregation becomes Bethel United Methodist Church.
<b>1982</b>	Bank renamed Summit Bank; 1ST Summit Bank in 1996.
<b>2026</b>	<b>The Salix Log Cabin celebrates its centennial.</b>

A NOTABLE SON OF SALIX

## G.H. Miller

**G.H. Miller** (born Adams Township, February 20, 1889) was educated at **Salix Academy**, then taught school for 7 years across Adams and Summerhill townships. He went on to establish a wholesale flour and feed business at Sidman in 1920, building his store on land purchased from the Pennsylvania Railroad and growing a trade throughout Cambria County employing 5 men — a notable example of the Academy's influence on the wider region. The **Forest Hills High School stadium** bears his name in recognition of his contributions to the community.

LASTING NAMES ON THE LAND

## Salix's Living Geography

**Rachel's Run** and **Rachel's Hill** — named by Solomon Adams for his sister Rachel, killed near Elton in 1777, preserved today in Rachel Hill Elementary School.

**Ike Kring Hill** on Route 160 — named for the family whose patriarch George arrived in 1806 and whose descendants helped found the bank.

**Beautyline** (Beauty Line Road) — the name of the planned Wiselban community survives even though the development was never completed.

**Coles Crossroads** — named for the Cole family on whose land Samuel Adams and an unknown Indian were buried together in 1777.

**Solomon Run** — named for **Solomon Adams**, brother of Samuel, one of the first white settlers in Cambria County.

**The Conemaugh Path** — the ancient Shawnee trail that became the Bedford Road through Adams Township; older than the village, the county, and the nation.

YOUTH & COMMUNITY

## Cub Scout Pack 51

**Cub Scout Pack 51** has served the youth of the Adams Township and Forest Hills School District area since **1975**. Chartered by the **Dunlo American Legion Post #573** throughout its existence, the Pack holds its den and pack meetings at **Bethel United Methodist Church** in Salix — the same congregation that traces its roots to the 1841 Evangelical United Brethren Church, the oldest Evangelical structure west of the Allegheny Mountains.



Inside G.W. Wright's Clover Farm Store, Salix — the heart of Main Street commerce for generations of Adams Township families.

◆ ◆ ◆  
BUILT BY

Adams · Kring · Stull · Barnhart · Fye · Stoll · Snavelly · Millions  
Wissinger · Livingston · Reynolds · Miller · Horner · Leamer · Dunmire

*Built in 1926 by community hands.*

*Standing still, one hundred years later.*

*A gift from the people of Salix*

*to one another — and to those who come after.*

1926 — 2026